

# Investor Conference

(Stock Code : 2855)

2021.08.24

 <http://www.pscnet.com.tw/>

 [investor@uni-psg.com](mailto:investor@uni-psg.com)

# Disclaimer

- This document may contain forward-looking statements, including but not limited to statements that address activities, events or developments that the Company expects or anticipates to occur in the future. All statements are made according to the projection of future operation and various political, economic and market factors beyond the Company's control. Therefore, the actual results may differ materially from those contained in the forward-looking statements.
- The financial information provided in the document has not fully been reviewed by accountant.
- This document is not and cannot be construed as an offer to purchase or sell securities or other financial products or solicitation of an offer.
- All texts, images, illustrations and other material are subject to copyright held by President Securities Corp. Any reproduction, dissemination, transmission, and forwarding is strictly prohibited without the express written permission of President Securities Corp.

# 2021 Q3 Overview & H1 Review



As of the end of Jun, 2021.



# Condensed Financial Statements

## Condensed Balance Sheets

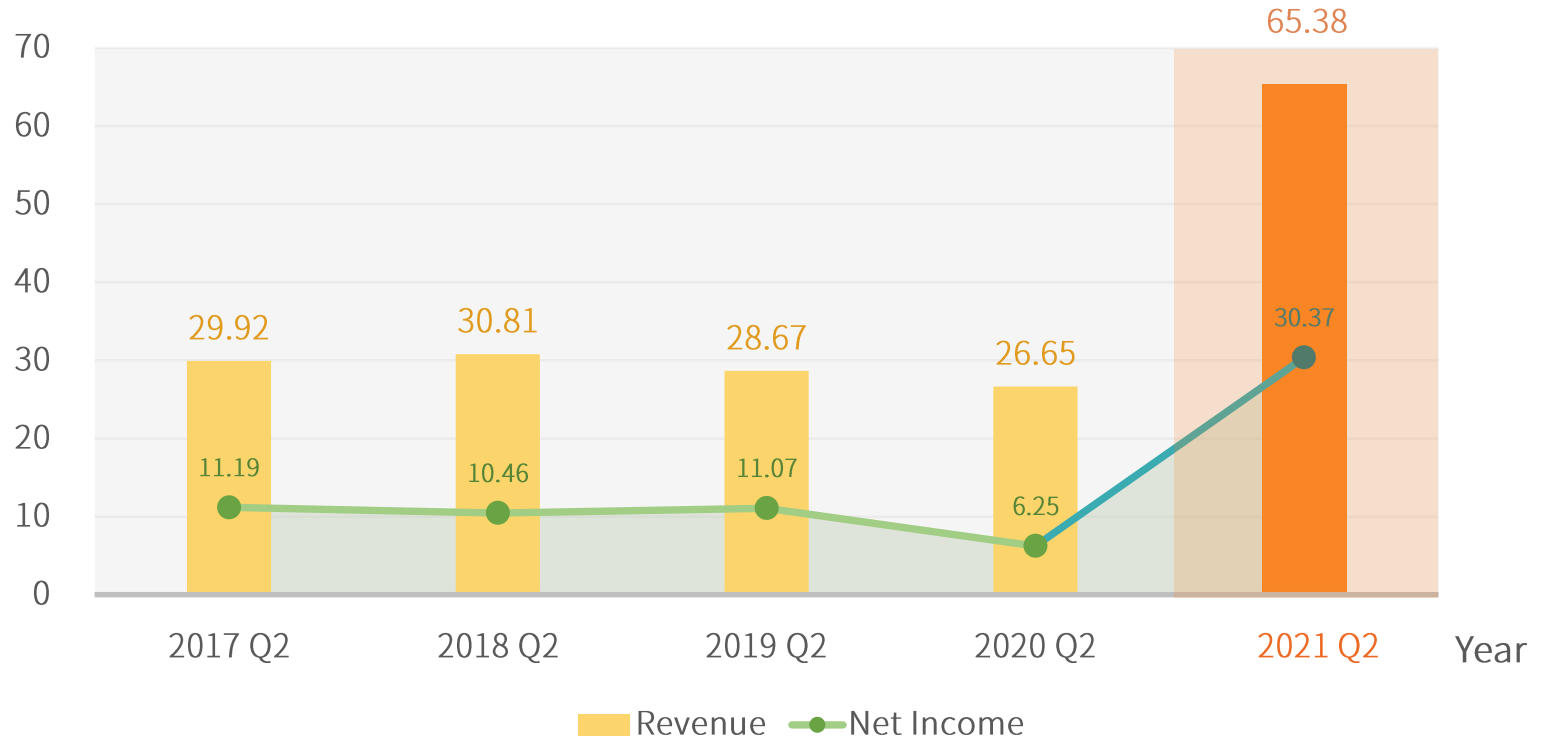
	2021 Q2	2020 Q2
Current Assets	113,372	75,292
Non-Current Assets	11,804	11,910
<b>Total Assets</b>	<b>125,176</b>	<b>87,202</b>
Current Liabilities	94,591	60,837
Non-Current Liabilities	129	170
<b>Total Liabilities</b>	<b>94,720</b>	<b>61,007</b>
Capital Common Stock	13,998	13,724
Other Equity	16,458	12,471
<b>Total Equity</b>	<b>30,456</b>	<b>26,195</b>

## Condensed Income Statements

	2021 Q2	2020 Q2
<b>Revenues</b>	<b>6,538</b>	<b>2,665</b>
Operating Expenditures	348	366
Operating Expenses	3,014	1,810
Operating Income	3,176	489
Other Income and Costs	226	203
Income Before Tax	3,402	692
Income Tax Expense	365	67
<b>Net Income</b>	<b>3,037</b>	<b>625</b>
Other Comprehensive Income	112	243
Total Comprehensive Income	3,149	868
<b>EPS(NTD)</b>	<b>2.17</b>	<b>0.45</b>

# Same period of 5-Years Operating Performances

100 Mil NTD



# Business Development

## Brokerage Business

Market share 2021Q1 **3.04%** → 2021Q2 **3.15%**

Loan balance Unrestricted purposes of loan is **436 million**  
Securities lending business is **12.76 billion**

System planning Electronic transactions accounted for **73.45%**.

## Proprietary Trading

Performance Shareholdings have been moderately controlled.

Operations strategy Focus in fundamental trend and retain the outperforming stocks.

## Fixed Income Dealing

Focus Focus on international Bonds.

Operations strategy Will operate conservatively to ensure profits in H2.

## Underwriting Business

Underwriting case 2020H1 **17** → 2021H1 **24**

Participation rate 2021H1 is **26.74%**

## Wealth Management

Employee Benefit Trust Asset size is **1.114 billion**

Non-discretionary Money Trust Asset size is **6.16 billion**

Develop Application for High-asset customers license.

## Quantitative Trading

Market making business Volume of trade **No. 5**

Market making Competition TX & MTX – **No. 2**

## Financial Product Business

Market share Warrant Business **5.69%**  
Share Options Business **38.20%**

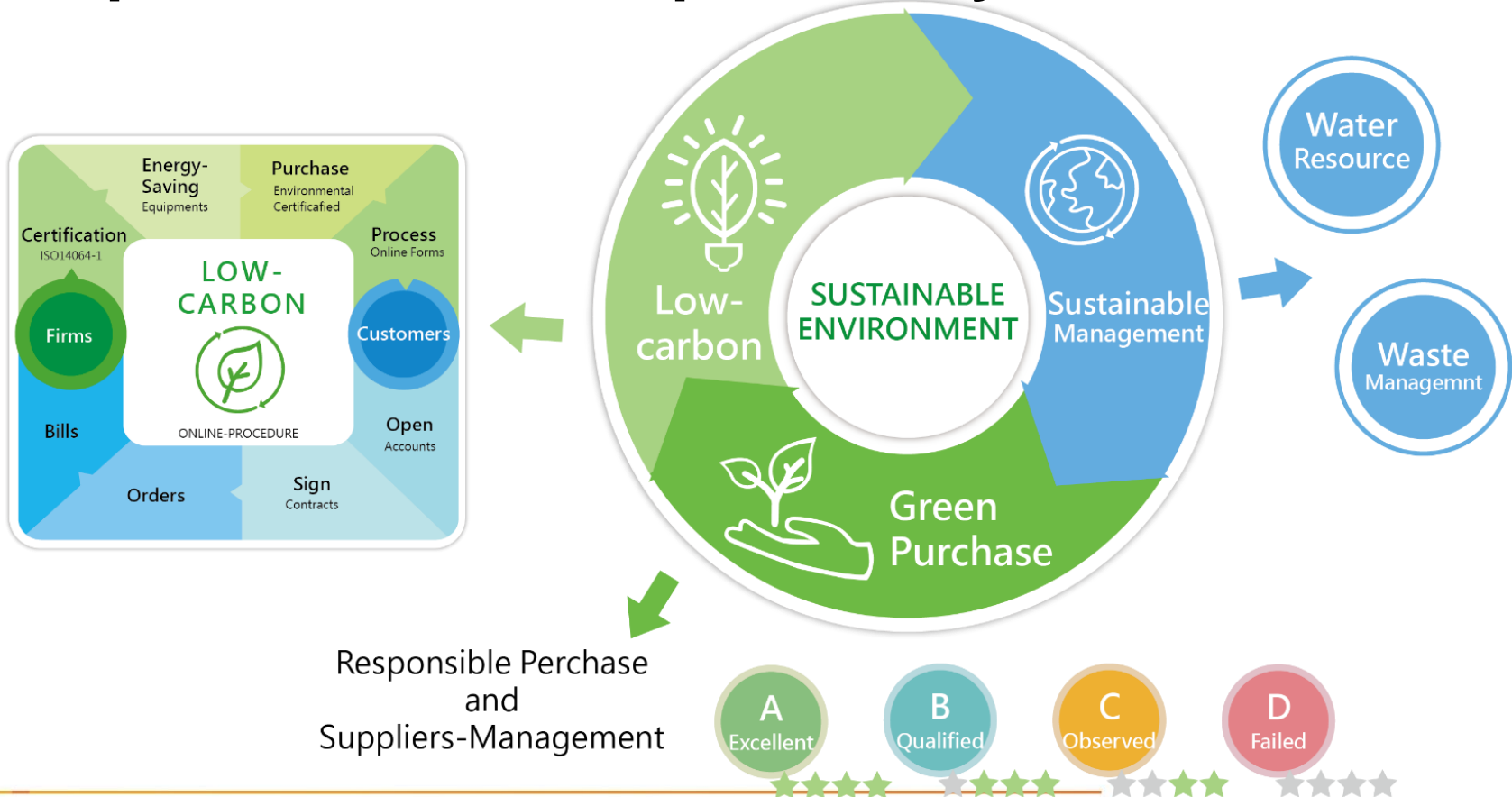


ETN Business Have issued 9 ETNs

New Issue ETN **President ICE FactSet Asia Semiconductor Net Total Return Index ETN (020025)**



# Corporate Social Responsibility



# Q&A



**PRESIDENT SECURITIES CORPORATION**